

***elvia* pro**

SYSTEM HOUSE FOR AUDIO AND VIDEO



# ***OB Trailer***

**ELV-15C/14M**



# Purpose and production areas



## PURPOSE

Large-sized comfortable multi purpose  
OB trailer for live sports or  
entertainment production  
Multi-camera field production with  
recording or multi-channel recording  
Production van for subordinate  
vans in case of big events

### VIDEO SYSTEM

SD 625/50 scanning, 4:3  
Serial digital componets (SDI)  
for main signal paths,  
PAL or analog componets  
for auxiliary purposes

### AUDIO SYSTEM

Mostly stereo (dual channel) analog,  
selected paths and/or equipment  
are 4-channel digital and analog



## PRODUCTION AREA

Comfortable large production room  
Big configurable LCD monitor wall  
Production desk with video switcher,  
DME and character generator control  
Another 2 rows of desks for slo-mo  
control and assistance,  
4 intercoms panels, phone sets  
Many as four seats in front and six  
ones at the back  
Movable side walls for expanding space

## AUDIO AREA

24-input analog audio mixer  
Main (stereo) and PFL listening  
Additional PPM meter  
Local audio sources — MD, DAT, CD  
and HD recorder  
Audio processor and limiters/expanders  
Dual channel audio matrix 24x8  
Extensive audio patch panel  
Large LCD display  
Analog and digital DA and other  
plug-in modules  
Intercom matrix and one intercom panel  
Sound-proof door, raised floor,  
wide window to production area



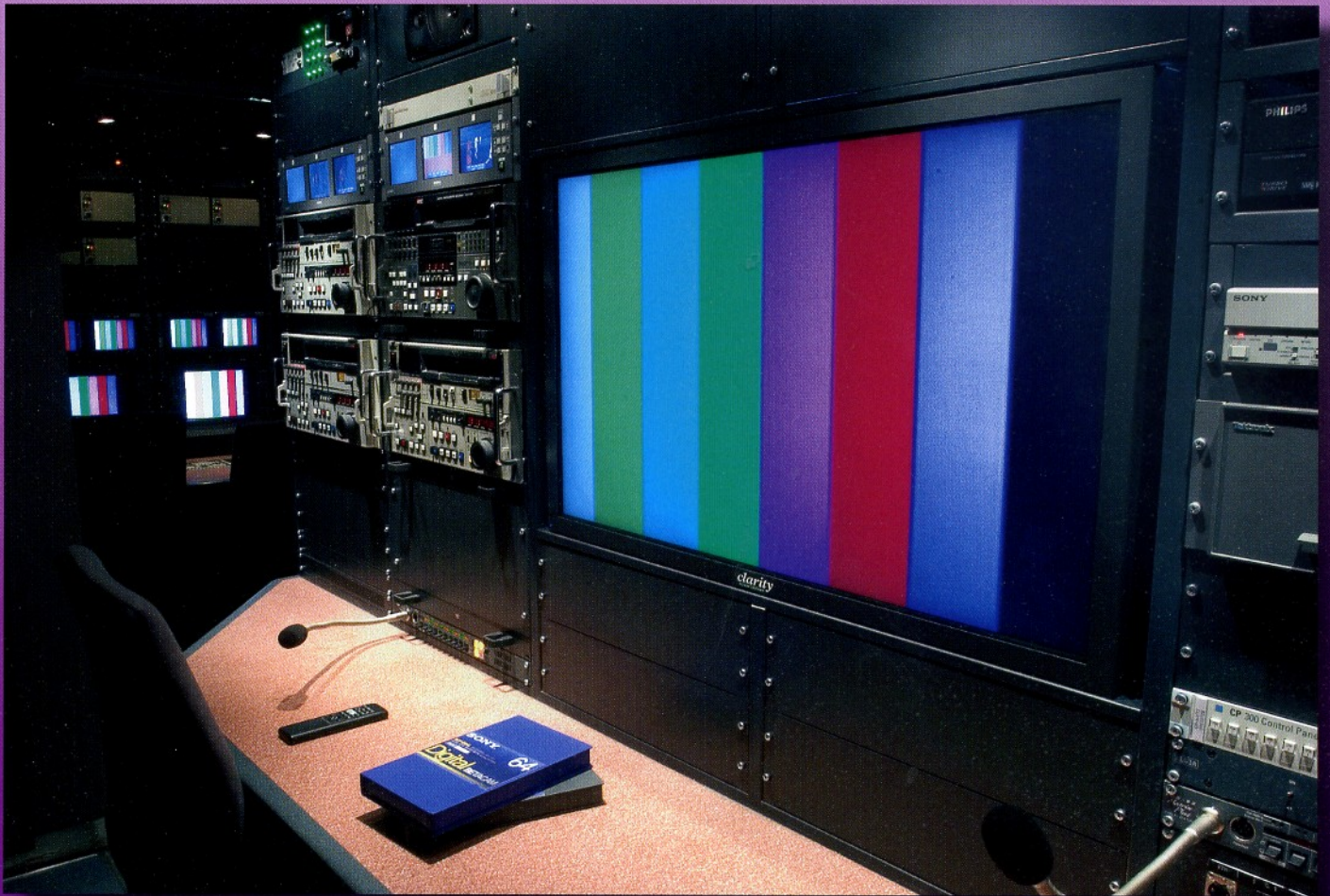
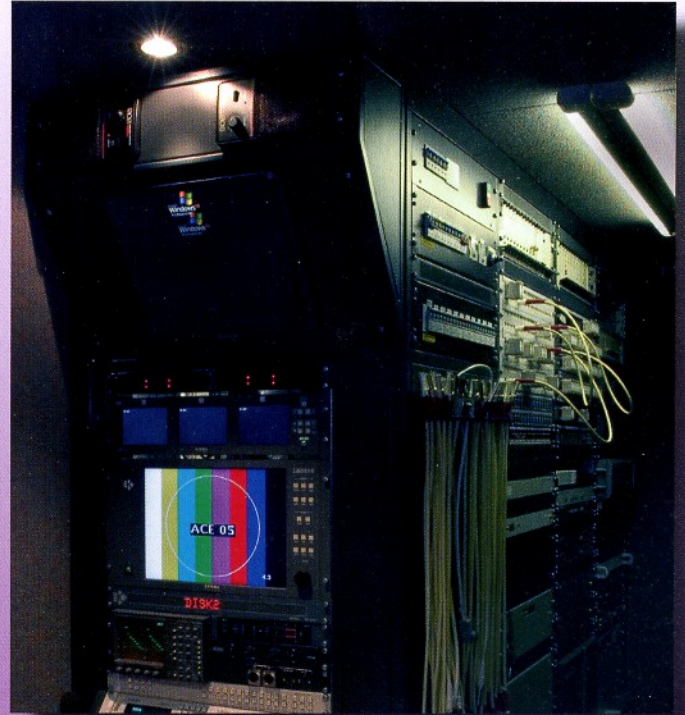




# Engineering areas

## VISION AND VTR's AREA

- Up to 15 camera chains with control panels and master set-up unit
- 9-inch and 14-inch monitors for cameras and set-up character generator frame
- Six Digital Betacam/DVCAM/XDCAM recorders
- Four channel digital disk recorder
- 9-inch, 14-inch and large LCD monitors for VTRs and video disk
- 2,5 M/E digital video switcher and DVE
- Digital video matrix 128×128 and tally auxiliary matrix
- A/D and D/A convertors
- DAs and auxiliary plug-in modules
- Video and remote patch panels
- Two auxiliary VHS recorders/TV tuners
- Twelve 19-inch equipment racks
- Operational desks with remote control and intercom panels
- Space for slo-mo controllers on desk (instead of production area)
- As many as six seats for operators
- Power distribution switchboard





# Vehicle & Coach-building



## VEHICLE AND COACHBUILDING

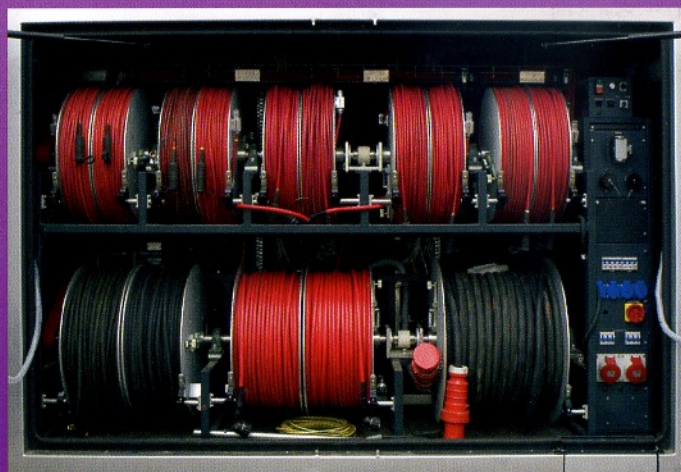
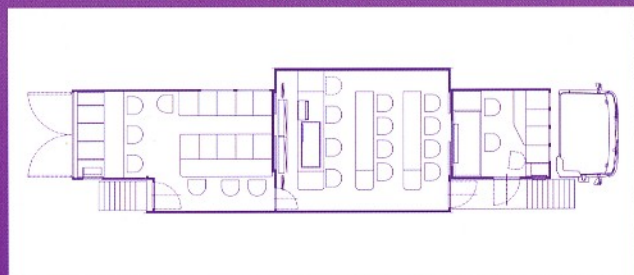
- Standard trailer chassis
- Custom coachbuild (steel frame and reinforces)
- Overall length 13,5 m, overall with 2,5/4,1 m, overall height 4,05 m
- Sliding side walls forming internal corridor with push-out steps
- Back full-size doors
- Internal and external lighting (for operation, maintenance and loading)
- Heating and a conditioning
  - 6 independent air-conditioning systems
  - electric floor-heating and wall-heating
  - auxiliary hot-air oil heating (operated on way too)

## ROOF AND BOTTOM STOWAGE

- Solid roof for maintenance, telescopic mast for TV aerial
- Under floor storage boxes (side access)
- Independent vehicle and operational batteries
- Isolating power transformers (under floor, side access)

## REAR CONNECTION AND STOWAGE AREA

- Up to 15 motorized cable drums in 2 rows
- Triaxial camera cables, multi-pairs audio and monitor cables
- Mains cable
- Large termination panels for external in/out connections
- Input power switch-board



**ELVIA-PRO, spol. s r.o.**  
Karlovo nám. 19, 120 00 Praha 2  
Czech Republic  
Tel.: + 420 224 999 411  
Fax: + 420 224 914 670  
E-mail: [info@elviapro.tv](mailto:info@elviapro.tv)  
Web: [www.elviapro.tv](http://www.elviapro.tv)